

# Olive

**o-live:** a Mediterranean evergreen tree grown for its fruit.

The Olive is thoughtfully designed with all the essentials to suit the needs of a growing family. Featuring generously sized bedrooms and a cosy home theatre, it offers both comfort and room to thrive.

## PERFECT FOR



Big families



Entertainers



Growing families



Home theatre option



First home buyers



Scullery included



# Facades



## Other compatible facades

Aspen  
Bayside  
Contemporary  
Crest  
Eden

Hillsdale  
Infinity  
Majestic  
Riviera  
Savoy

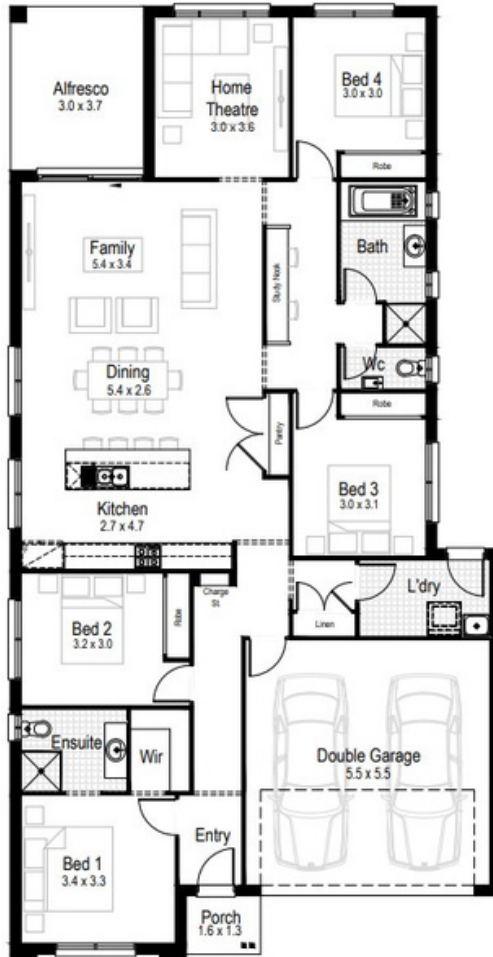
12.87 m

MINIMUM LOT WIDTH

STCC (Subject to Council Conditions)

# Olive 23

4 2 2



Living area  
164.43 m<sup>2</sup>

Garage  
33.06 m<sup>2</sup>



Alfresco  
11.16 m<sup>2</sup>



Porch  
2.21 m<sup>2</sup>



Overall width  
11.16 m



Overall length  
21.47 m



Total area  
210.86 m<sup>2</sup>

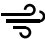







# COMPLETE YOUR DREAM HOME

SELECT AN INCLUSIONS PACKAGE  
TO SUIT YOUR STYLE AND BUDGET



## WE CALL THEM NECESSITIES. NOT UPGRADES

When our team created our range of inclusions packages, we decided to select items that you will need at every stage of your life. That's why our standard inclusions packages include:

- |   |   |
|---|---|
|  <b>Air Conditioning</b>                           |  <b>Automatic Garage Door</b>              |
|  <b>Tiled Outdoor Alfresco</b>                     |  <b>Site Costs for Standard Lot*</b>       |
|  <b>Carpet and Tiles Throughout</b>                |  <b>Quality Stainless Steel Appliances</b> |
|  <b>Built-in Robes with Mirrored Sliding Doors</b> |  <b>PLUS SO MUCH MORE</b>                  |



**Pick up a brochure or visit [hudsonhomes.com.au](http://hudsonhomes.com.au)**

\*Site costs for a standard, cleared block with up to 1m fall across the building platform and up to M class slab



**hudsonhomes.com.au**

1300 246 700

Let's be friends

